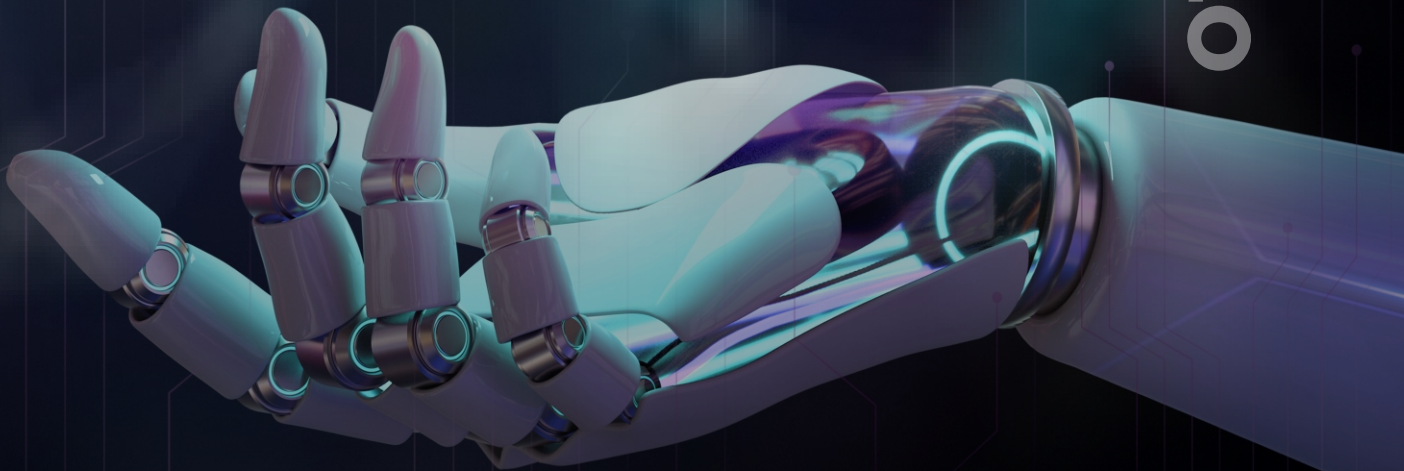




# TELECOM\_T&M BUSINESS

OTDR | SPLICERS | OLT & ONT



# TREAD NETWORKS

## CORE ALIGNMENT



You dream,  
we **DESIGN**

## ACTIVE V - GROOVE

### A3



- › New Friendly GUI Design
- › SOC Support
- › 4.3" Color LCD Touch Screen
- › Portable Charger Support
- › It can store 10000 records(Data and image each)
- › Splice time: SM Quick mode: 7s.
- › 5500 arcs electrode life

### A3



### M9



- › Truly Light Weight and Handy Size
- › Adjustable Strap Hanger
- › Outstanding Magnification and Resolution
- › 4.3" Color LCD Touch Screen
- › Double Tapping (Zoom in & out)
- › Dual operating mode (Touch screen & button)
- › Fast splicing speed of 7s
- › 5500 arcs electrode life

### M7



### View 6L



- › 3 Bright LEDs for dark environment
- › 7 second splicing time
- › Ceramic Clamp - Improved durability
- › Easy to replace electrodes
- › Changeable holder for multi-functional splicing
- › 5" Touch Screen with Smart GUI
- › The Highest 520X magnification
- › Double Tap to Zoom in & out
- › 5500 arcs electrode life

### View 6C



### VIEW5 PRO

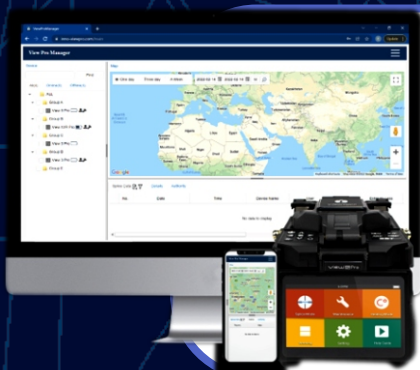


- › 7 sec (quick mode) / 9 sec (SM auto mode)
- › 15 sec (typical heating time)
- › 520X magnification
- › 5" LCD Touch screen / button
- › 3 Bright LEDs for Dark Environment
- › Built-in IoT Module for Mobile Data Communication
- › Web-based, Real-time Operation System
- › 5500 arcs electrode life

### VIEW3 PRO



## Smart IOT Fusion Splicer Management System



📍 **Geolocation all through real-time**

📍 **GPS for real-time location**

📋 **Comprehensive job assignment**

📁 **Asset & Fleet Management**

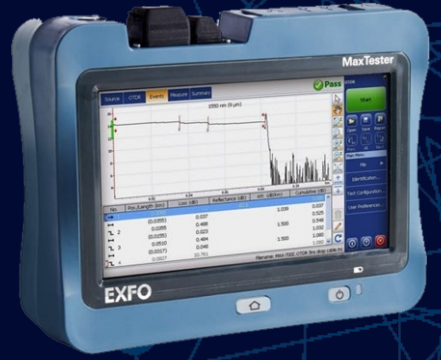
⚠️ **Preventive Maintenance**

🔒 **Anti-theft**



## MaxTester 715D - 720D - 730D OTDR

- › Rugged, handy, lightweight, tablet-inspired design built for outside plant
- › 7-inch, outdoor-enhanced touchscreen—the biggest in the handheld industry
- › 12-hour autonomy
- › Dynamic range up to 32/36/39 dB
- › Swap-Out connector, replaceable whenever necessary for optimal performance over time without undue service cost and downtime



## Optical Explorer - OX1 Industry's First Optical Fiber Multimeter

- › Displays fiber link KPIs (length, loss, ORL and power) in under 3 seconds, through single-ended testing
- › On-the-spot detection and location of common causes of failures using EXFO's patent-pending Fault Explorer
- › Built-in light source and power checker (dual-band available)
- › Rechargeable battery for over 10 hours of use on a single charge
- › Verification and troubleshooting of any singlemode fiber link up to 40 km (point-to-point)
- › FTTx service activation: GPON, EPON, XGS-PON, 10GE EPON



## Intelligent Optical Link Mapper - iOLM

- › Dynamic multipulse acquisition
- › Intelligent trace analysis
- › All results in a single view
- › Comprehensive diagnosis
- › Provides one-touch, automatic analysis and clear link view display
- › 6. Generates OTDR trace files (.sor)



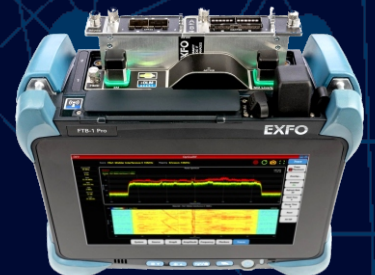
## Optical Power Expert - PX1

- › Connect to smart app via Bluetooth: field data reporting, cloud storage, workflow management
- › User-friendly: compact, color touchscreen and intuitive GUI
- › Robust and rugged: IP54 design for dust and water protection
- › Time-saving features: no offset nulling, lightning-fast boot-up
- › High-capacity internal data storage
- › 3-year warranty and calibration interval



## RF Testing - 5GPro Spectrum Analyzer

- › Fr1 (sub-6 GHz) and FR2 (mmWave) with a single solution
- › Real-time spectrum analysis (RTSA) of bandwidth up to 100 MHz
- › Supports 5G NR demodulation and beamforming analysis
- › 5G SSB blind scanner
- › Complete, compact solution for validating 4G and 5G RAN
- › First field upgradeable solution: scale at your own pace
- › TDD gated sweep & RF absolute time error



A TATA Product








**TEJAS**<sup>®</sup>  
**NETWORKS**  
Future Ready. Today

## TJ1400-1\_8 & 16 port GPON OLT

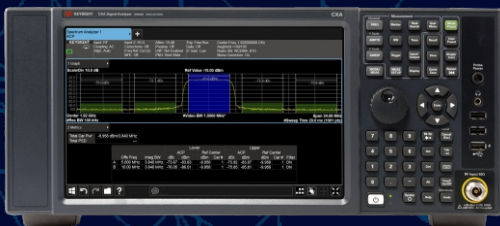


 **8 Port GPON OLT / 16 port GPON OLT Variants**

**Downstream - 2.5 Gbps**  
**Network Protection - 50ms**

-  **Synchronization support (only on TJ1400-1 16 port)**
-  **Management : CLI, NMS**
-  **Supports upto 2048 terminal connections with 1:128 split**
-  **Advanced 50ms network protection schemes**
-  **Supports OMCI and TR-069 configuration of ONT**

## CXA X-Series Signal Analyzer Multi-touch N9000B



- > 9 kHz to 3.0, 7.5, 13.6, or 26.5 Ghz**
- > Maximum Frequency - 26.5 Ghz**
- > Maximum Real-Time Bandwidth - n/a**
- > Maximum Analysis Bandwidth - 25 MHz**
- > Phase Noise @1 GHz (10 kHz offset) - -110 dBc/Hz**

❖ **Technology Solutions** ❖ **Leasing / Rent of Telecom Equipments** ❖ **Spares, Service & Calibration**

Trichy : No.36, Ambals Complex, Chinthamani, Karur Bypass Road, Trichy - 620 002.  
Chennai : Workfella Business Centre, No.37, TTK Road, CIT Nagar, Alwarpet, Chennai - 18.  
(Landmark - Next to Croma Showroom)

Mobile : +91 90032 15884 / +91 84280 36391

E-mail : sales@treadnetworks.in / treadnetworks@gmail.com

treadnetworks

